

WEB HONOR YOUR TRUST



PETROSA  
GROUP  
WEBSITE

# PETROSACO

IMPORT AND SUPPLY OF OIL AND GAS EQUIPMENT





# PETROBRAS

GROUP





PETROSACO



PETROSACO



# KNOW MORE ABOUT US



The Petro Sepanta Azar company under the commercial name the **Petrosaco**, is a well known title in the field of oil, gas and petrochemical industries which has a very long history in producing and importing essentials and facilities for industrial projects in the country. The Technobush factory and AsiaMehr under whose title the Petro Sepanta Azar company formerly operated were present in carrying out developmental plans in many factories, supplying the required equipment and facilities of several power plants and refineries in the country, before merging in many projects. Petrosa Co. has made a great name for itself by relying on 20 years of experience and the knowledge of it's experts in the fields of production, import and equipment supply for oil and gas production. Recognition and observance of national and international standards are the instruments that help us make well-informed decisions. These means are obviously effective in promoting quality, safety, innovation and business. By adhering to international standards, Petrosa company strives for the attainment of better quality in oil, gas, petrochemical and steel industries and also the efficiency of energy sources. Furthermore we believe that respecting international environment standards is our obligation to the next generations and the future of our beloved Earth.





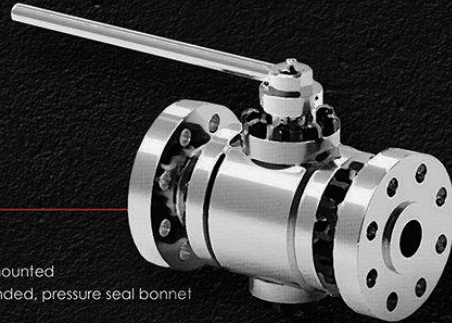
PETROSARCO

## PRODUCTS (VALVE)

### BALL VALVES

#### General Features

Type Of Wedge	Floating or trunnion mounted
Construction	Bolted, welded, extended, pressure seal bonnet
Size	0,25" - 56"
Pressure ANSI	150 lbs - 4500 lbs
End Connections	Flanged, BW, SW, THR, HUB, PE
Operated	Lever, gear, bare stem, actuator
Options	Extended bonnet, bellow sealed
Seat Materials	Graphite, Devlon, TFM, PTFE, PEEK, POM, PCTFE
Through Conduit	Expanding wedge or slab gate construction
Design & Testing	All available international standards according to API - ASTM - ISO - ASME



#### Material

Duplex, Super Duplex,  
 Stainless Steel 304L, 310S, 316L,  
 Carbon Steel, Low Temp Carbon Steel,  
 Alloy 600, Alloy 625, C 276, Alloy 800, Alloy 825,  
 Nickel 200, Nickel 201, Monel® 400, Monel® K500,  
 Titanium, Zirconium, Carpenter 20

#### Ball Valve Products



END ENTRY CONSTRUCTION



TOP ENTRY CONSTRUCTION



FLOATING BALL SOFT SEATED



METAL SEATED TRIM



SOFT SEATED TRIM



FLOATING BALL METAL SEATED

## PRODUCTS (VALVE)

### GATE VALVES

#### General Features

Type Of Wedge	Flexible, solid, expanding wedge
Construction	Bolted, welded, extended, pressure seal bonnet
Size ANSI	0,25" - 16"
Pressure ANSI	150lbs - 4500lbs
Size DN	DN 6 - DN 400
Pressure PN	PN 10 - PN 400
Design Temp	minus 196 C up to 816 C
End Connections	Flanged, BW, SW, THR, HUB, PE
Operated	Lever, gear, bare stem, actuator
Options	Extended bonnet, bellow sealed
Through Conduit	Expanding wedge or slab gate construction
Bellow Seal Materials	304 - 321 - 316Ti - Alloy 625 - C276
Design & Testing	All available international standards according to API - EN - ISO



#### Material

Duplex, Super Duplex, Stainless Steel, Carbon Steel, Zirconium  
 Alloy 600, Alloy 625, C 276, Alloy 800, Alloy 825 See More In Website...  
 Titanium

#### Gate Valves Products



BELLOW SEALED



EXTENDED BONNET



THROUGH CONDUIT



PRESSURE SEAL BONNET



STANDARD



PETROSARCO



## PRODUCTS (VALVE)



PETROSARCO

### GLOBE VALVES



#### General Features

Type Of Disc	Plug, needle, swivel, regulating disc
Construction	Bolted, welded, extended, pressure seal bonnet
Pattern	Straight, Angle, Y-type
Size ANSI	0.25" - 16"
Pressure ANSI	150 lbs - 4500 lbs
Size DN	DN 6 - DN 400
Pressure PN	PN 10 - PN 400
Design Temp	minus 196 C up to 816 C
End Connections	Flanged, BW, SW, THR, HUB
Options	Extended bonnet, bellow sealed
Operated	Handwheel, actuator operated, bare stem
Bellow Seal Materials	304 - 321 - 316Ti - Alloy 625 - C276
Design & Testing	All available international standards according to API - EN - ISO

#### Material

Duplex, Super Duplex, Stainless Steel, Carbon Steel	Zirconium
Alloy 600, Alloy 625, C 276, Alloy 800, Alloy 825	See More In Website...
Titanium	

#### Globe Valves Products



Y-TYPE DESIGN



PRESSURE SEAL BONNET



BELLOW SEALED



ANGLE TYPE

## PRODUCTS (VALVE)



PETROSARCO

### CHECK VALVES



#### General Features

Design Type	Swing, piston, ball, dual plate, nozzle check
Size ANSI	0.25" - 16"
Pressure ANSI	150 lbs - 4500 lbs
Size DN	DN 6 - DN 400
Pressure PN	PN10 - PN 400
Design Temp	minus 196 C up to 816 C
End Connections	Flanged, Wafer type, BW, SW, THR, HUB
Options	Pressure seal cover, soft and metal seat
Design Features	Retainerless design
Design & Testing	All available international standards according to API - EN - ISO

#### Material

Duplex, Super Duplex, Stainless Steel, Carbon Steel
Alloy 600, Alloy 625, C 276, Alloy 800, Alloy 825
Titanium
Zirconium
See More In Website...

#### Check Valves Products



INLINE BALL CHECK VALVE



NOZZLE CHECK VALVE



DUAL PLATE CHECK VALVE



PISTON CHECK VALVE



SWING CHECK VALVE

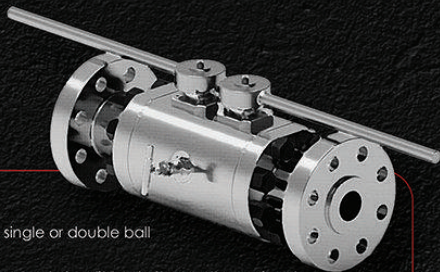




PETROSACO

## PRODUCTS (VALVE)

### DOUBLE BLOCK AND BLEED VALVES



#### General Features

Design	Floating or trunnion mounted - single or double ball
Seats	Soft or metal seated
Construction	One piece body (top, side or end entry), split body (two or three piece)
Size ANSI	0.25" - 16"
Pressure ANSI	150 lbs - 4500 lbs
Size DN	DN 6 - DN 400
Pressure PN	PN 10 - PN 400
End Connections	Flanged, BW, SW, THR, HUB, PE
Operated	Lever, gear, bare stem, actuator
Seat Materials	Graphite, Devlon, TFM, PTFE, PEEK, POM, PCTFE
Hard Facing	Various hard facing on ball and seats
Options	Extended stem, Extended bonnet, Single or double piston design
Design & Testing	All available international standards according to API - EN - ISO

#### Material

Duplex, Super Duplex, Stainless Steel, Carbon Steel	Zirconium
Alloy 600, Alloy 625, C 276, Alloy 800, Alloy 825	See More In Website...
Titanium	

#### Double Block & Bleed Valves Products



MONOFLANGE VALVE



FLOATING SOFT SEATED



TRM SOFT SEATED



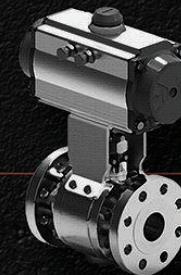
TRM METAL SEATED

## PRODUCTS (VALVE)



PETROSACO

### AUTOMATED VALVES



#### General Features

Type Of Actuator	Electrical, pneumatic or hydraulic driven actuators
Brands	Rotork, Bettis, EHO-Matic, Auma, etc

#### Material

Duplex, Super Duplex, Stainless Steel, Carbon Steel	Zirconium
Alloy 600, Alloy 625, C 276, Alloy 800, Alloy 825	See More In Website...
Titanium	

#### Automated Valves Products



PNEUMATIC OPERATED GLOBE VALVE



ELECTRICAL OPERATED GATE VALVE







PETROSARCO

## PRODUCTS (FITTINGS)

### WELDED FITTINGS



#### General Features

Size	1/8" - 120"
Connection	Butt Weld
Wall Thickness	SCH 5 - SCH XXS
Type	Welded & Seamless

#### Material

Duplex, Super Duplex,  
 Stainless Steel 304L,310S,316L  
 Carbon Steel, Low Temp Carbon Steel  
 Alloy 600, Alloy 625,C 276, Alloy 800, Alloy 825  
 Nickel 200,Nickel 201,Monel® 400,Monel® K500  
 Titanium,Zirconium,Carpenter 20  
 See More In Our Website...

#### Welded Fittings Products



ELBOW



CAP



REDUCER



STUB END



TEE



CROSS

## PRODUCTS (FITTINGS)

10

PETROSARCO

### HIGH PRESSURE



#### General Features

Size	1/4" - 4"
Pressure ANSI	2000 lbs - 3000 lbs - 6000 lbs - 9000 lbs
Connection	SW - THR - PE - BE

#### Material

Duplex, Super Duplex,  
 Stainless Steel 304L,310S,316L  
 Carbon Steel, Low Temp Carbon Steel  
 Alloy 600, Alloy 625,C 276, Alloy 800, Alloy 825  
 Nickel 200,Nickel 201,Monel® 400,Monel® K500  
 Titanium,Zirconium,Carpenter 20  
 See More In Our Website...

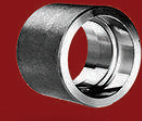
#### High Pressure Products



UNION



CAP



COUPLING



ELBOW



HEX BUSHING

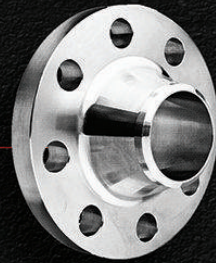


TEE



## PRODUCTS (FITTINGS)

### FLANGES



#### General Features

Size	1/2" - 60"
Pressure ANSI	150 lbs - 2500 lbs
Face	RF & RTJ
Wall Thickness	SCH 5s - SCH xxx
End Connection	BW - SW - THR
Type Of Special	Orifice Flanges - Long Welding Neck Flange - Weldoflange - Nipoflange - Expander Flange - Reducing Flange

#### Material

Duplex, Super Duplex,	Nickel 200, Nickel 201, Monel® 400, Monel® K500
Stainless Steel 304L, 310S, 316L	Titanium, Zirconium, Carpenter 20
Carbon Steel, Low Temp Carbon Steel	See More In Our Website...
Alloy 600, Alloy 625, C 276, Alloy 800, Alloy 825	

#### Flanges Products



SOCKET WELD



WELD NECK



SLIP ON



BLIND



## PRODUCTS (PIPES)

### SEAMLESS



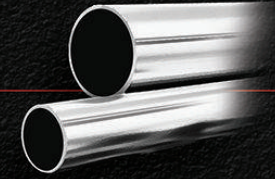
#### General Features

Size	1/4" - 30"
Wall Thickness	SCH 5s - SCH xxx
Length	6m - 12m

#### Material

Duplex, Super Duplex,	Alloy 600, Alloy 625, C 276, Alloy 800, Alloy 825
Stainless Steel 304L, 310S, 316L	Nickel 200, Nickel 201, Monel® 400, Monel® K500
Carbon Steel, Low Temp Carbon Steel	Titanium, Zirconium, Carpenter 20
	See More In Our Website...

### WELDED PIPES



#### General Features

Size	1/4" - 80"
Wall Thickness	1.65mm - 31.75mm
Type	arc-welded , electric resistance-welded , hot-finish electric resistance-welded

#### Material

Duplex, Super Duplex,	Alloy 600, Alloy 625, C 276, Alloy 800, Alloy 825
Stainless Steel 304L, 310S, 316L	Nickel 200, Nickel 201, Monel® 400, Monel® K500
Carbon Steel, Low Temp Carbon Steel	Titanium, Zirconium, Carpenter 20
	See More In Our Website...





# PETROSACO

## Site Services:

One of the exclusive services which Petrosa Co. has taken into account for our clients and costumers, provides the possibility of submitting quotation requests and finalizing deals and purchases through the website. An advantage of this service is that you can be notified of all the step by step details from the very moment of the pro forma invoice being issued up to the last stages which are namely, the sending of the shippin. documents,certificate, cargo loading and consignment

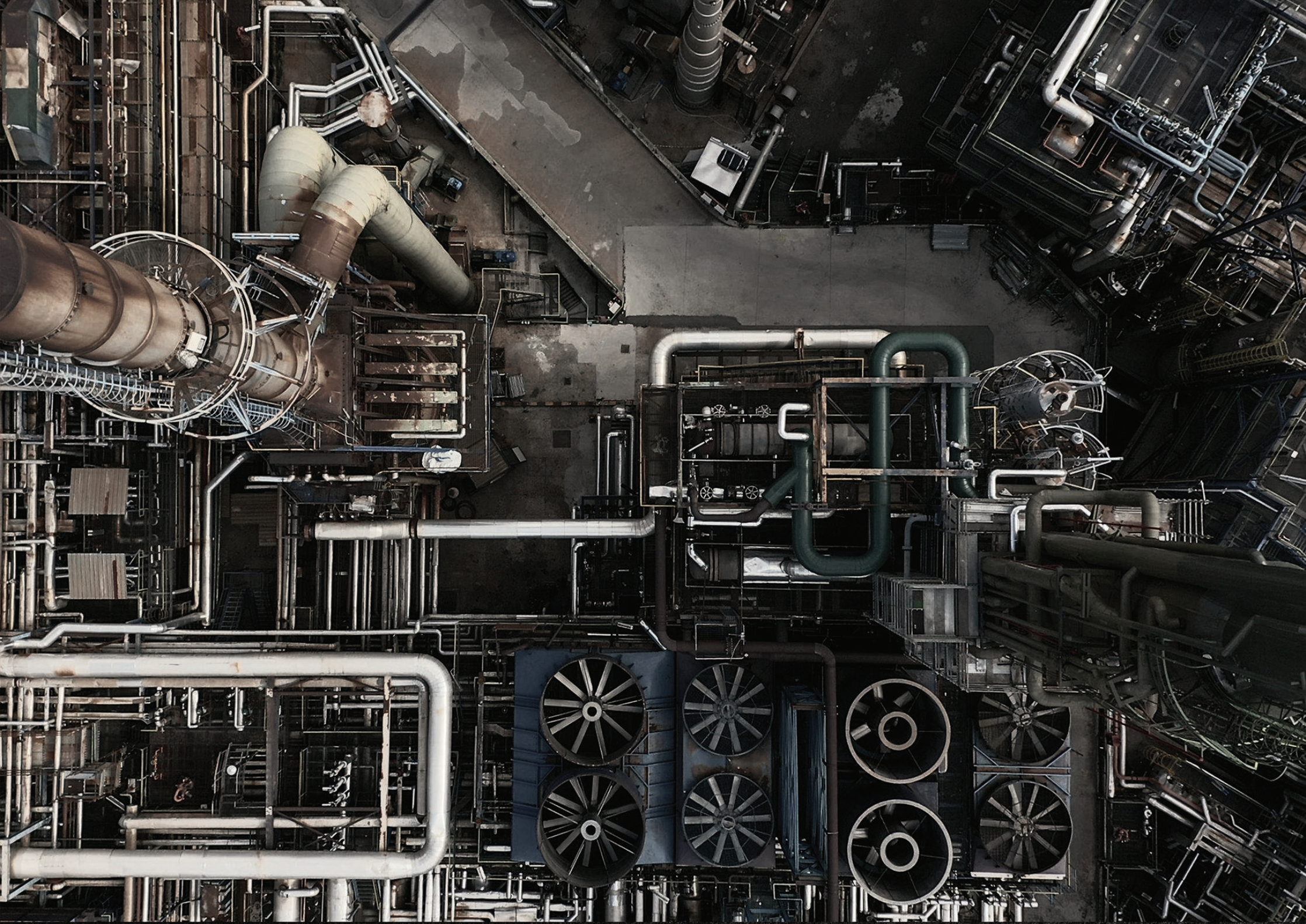
By referring to the Petrosa Co. website you can gain access to our chart of pipe standards and product materials

Petrosa Co group offers various purchasing. Procurement and trading house services to national and international customers

WWW.PETROSACO.COM









A red wall with a vertical crease down the center. Black oil splashes are visible, with a large puddle at the bottom and smaller splatters above. The word 'PETROSACCO' is written in white serif font across the middle, with the splashes appearing to drip over and around the letters.

# PETROSACCO

WE HONOR YOUR TRUST